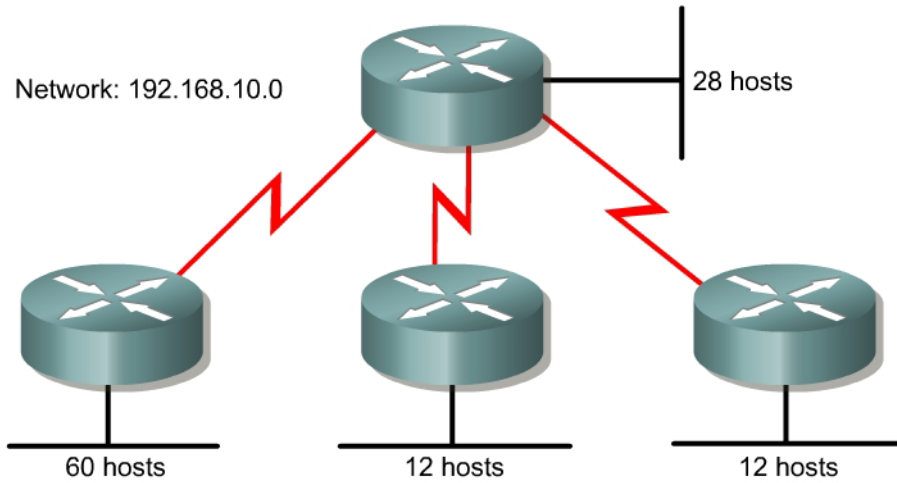


### Lab 2.10.2a VLSM 1



#### Objective

Create an addressing scheme using variable length subnet masking (VLSM).

#### Scenario

The assignment is the Class C address 192.168.10.0 and it must support the network shown in the diagram. The use of IP unnumbered or NAT is not permitted on this network. Create an addressing scheme that meets the requirements shown in the diagram.

---

---

---

---

---

---

---