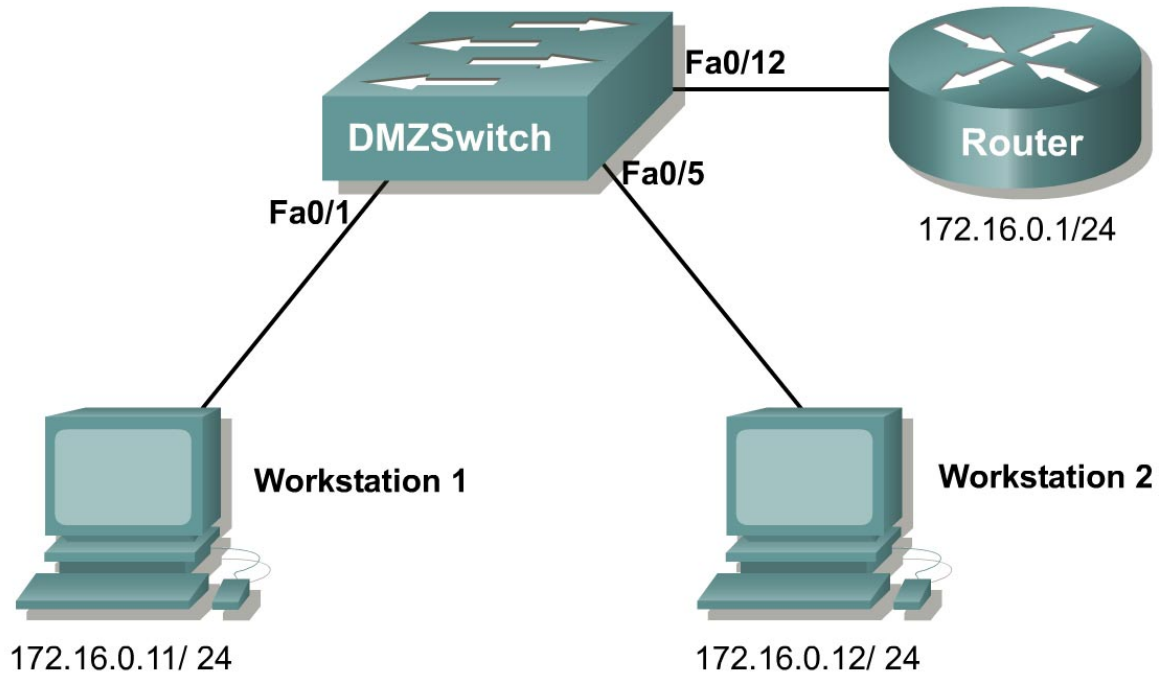


Lab 9.9.10 Configuring Protected Ports



Objective

The student will configure Private VLAN Edge protected ports.

Equipment

The following equipment is required to complete this lab:

- Catalyst 3550 series or 2950 series switch
- IOS 12.1(11)EA1
- Router or a workstation acting as a router

Scenario

Configure the DMZ switch so that the servers on ports 1 through 8 cannot interact directly with each other. All servers need to be able to communicate with the firewall connected to port 12.

Step 1

Configure the network as shown in the diagram, including IP addresses on both workstations and the router. Use the **ping** command to confirm connectivity between all the devices.

Step 2

Select ports 1 through 8.

Note: Include all spaces in the command.

```
DMZSwitch(config)#interface range fa0/1 - 8
```

Step 3

Enable port protection on these interfaces and then return to privileged EXEC mode.

```
DMZSwitch(config-if-range)#switchport protected
DMZSwitch(config-if-range)#end
DMZSwitch#
```

Step 4

Attempt to ping between the workstations.

1. Was the ping successful? Why or why not?

Attempt to ping the router from either workstation.

2. Was the ping successful? Why or why not?

Step 5

Disable port protection for Workstation 2, which is port FastEthernet 0/5, and return to privileged EXEC mode.

```
DMZSwitch#configure terminal
DMZSwitch#interface fastethernet 0/5
DMZSwitch(config-if)#no switchport protected
DMZSwitch(config-if)#end
DMZSwitch#
```

Step 6

Attempt to ping between the workstations.

3. Was the ping successful? Why or why not?

Attempt to ping the router from Workstation 1.

4. Was the ping successful? Why or why not?

Attempt to ping the router from Workstation 2.

5. Was the ping successful? Why or why not?
